



Dallas Section of the Society Petroleum Engineers Fifth Annual Softball Tournament



What: Co-ed (2:1 male:female) Oil & Gas Softball Tournament hosted by the SPE Dallas Young Professionals aimed at promoting industry camaraderie and benefitting SPE Dallas Community Outreach, which assists with educational programs in the DFW Metroplex. All teams are guaranteed at least two games. Tournament will be capped at 16 teams.

When: April 21, 2012 at 8:00 am (first games will start at 8:30 am)

Where: McInnish Park Softball Complex, 2335 Sandy Lake Rd, Carrollton, TX 75019

How: Send your team name with contact person information (name, email and phone number) to Brian.Chacka@Denbury.com and pay the \$250 entry fee donation by **April 12, 2012**. Donate online at <http://www.spedallas.org/luncheon.htm> or send a check to:

Larry Champlin
DeGolyer & MacNaughton
5001 Spring Valley Rd, Suite, 800 East
Dallas, TX 75244

Who: The tournament is open to only oil and gas industry personnel and their spouses (no ringers). If you don't have enough players for a full team or are an individual, we will try to help you put together a team. All sponsors, participants, coworkers, and family will receive free lunch, snacks and beverages, so even if you are not playing, come support your colleagues. The winning team will get their team's name inscribed on the Tournament Champions Cup and get to keep the cup until next year's tournament.

Sponsorship! **PLEASE CONTACT YOUR EMPLOYER/COMPANY ABOUT SPONSORING THIS EVENT. SPONSORSHIP IS AN ESSENTIAL PART OF MAKING THIS EVENT A SUCCESS!**

\$500 – Gold Field Sponsor – Donation will help pay for field rental and umpire fees. Sponsorship includes recognition on the tournament bracket banner, tournament program, SPE YP webpage, and during announcements at the tournament. You are welcome to hang your company banner on one of the fields.

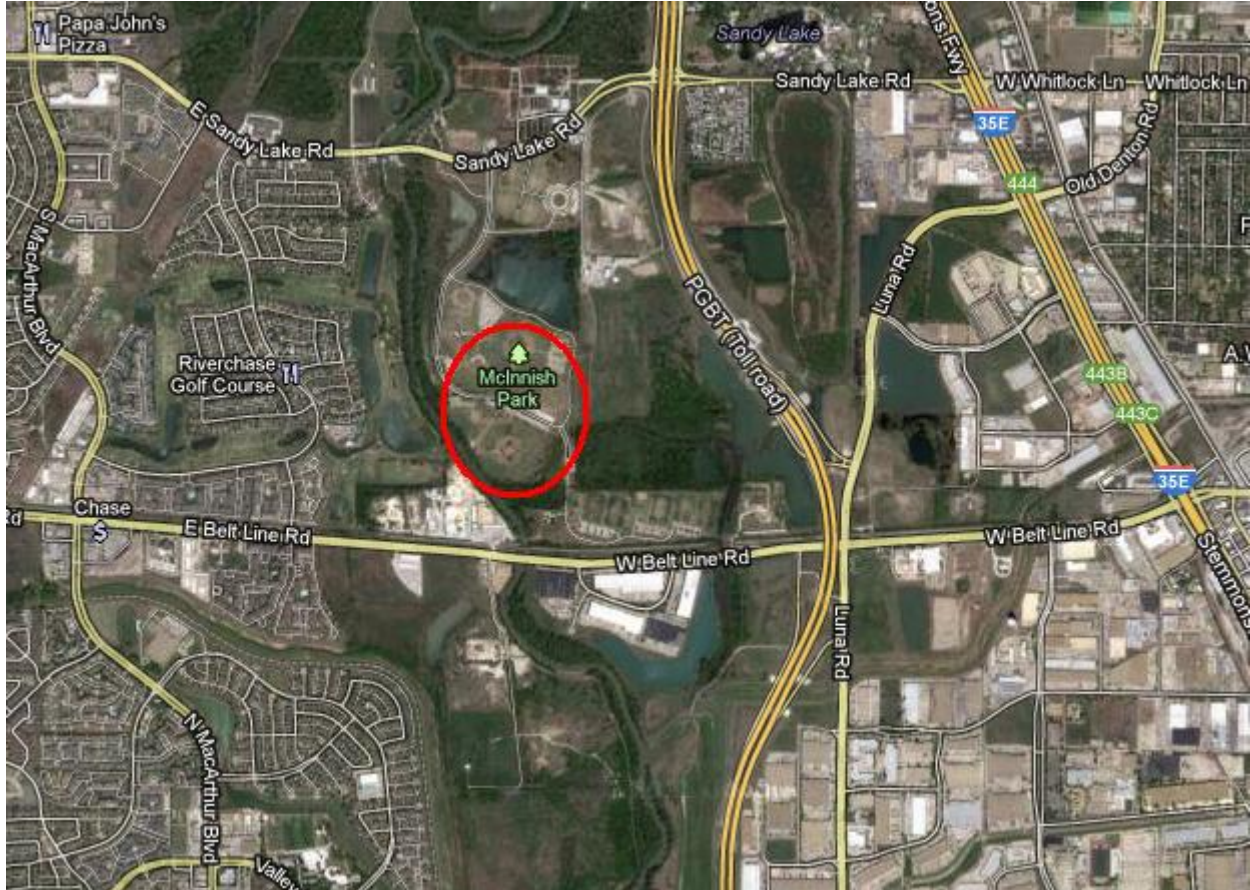
\$200 – Silver Food/Drink Sponsor – Donation will go towards paying for food and drinks for participants. Sponsorship includes recognition on the tournament bracket banner, tournament program, SPE YP webpage, and during announcements at the tournament.

Sponsors may also hand out items at the tournament.

Additional Info: All games will be officiated by USSSA umpires and game balls will be provided. Teams are required to furnish their own bats and gloves. Uniforms (same colored shirts) and numbers are not required, but are encouraged. Tournament format will be double elimination with 55 minute games. Team seeding will be based on the previous year's finish.

Questions? Check the SPE Young Professionals webpage (<http://www.dallasspeyp.com/>) or contact Sara Miller (SMiller@spemail.com) or Brian Chacka (Brian.Chacka@Denbury.com).

Directions: From 35E or the President George Bush Tollway, turn west on Sandy Lake Road in Carrollton (north of 635 and south of 121). Follow Sandy Lake Road just past Carrollton Animal Services and turn south (left) into McInnish Park. Follow the main driveway in the park towards the back and stay to the right. The softball complex will be on the right just south and west of the parking lot.



SPE Dallas Softball Tournament Rules

Teams must play at least 9 players in the field, of which at least 3 must be female. There are no restrictions to where players can be positioned in the field. If a team does not have at least 9 players and at least 3 female players, they will forfeit. Teams can bat as many players as they want, but only 10 may play in the field at one time. Fielding substitutions can be made in or out throughout a game for any player in the batting order, but the batting order may not change.

No more than two male players may bat consecutively. If a team does not have enough female batters for the exact 2:1 ratio, they will cycle the female players through the lineup.

All batters start with 1-1 count. 1 courtesy foul is allowed.

Extra innings will be played 1 pitch.

12" softballs will be supplied and will be used for all batters and all games.

If a male batter walks before a female batter, he will be awarded second base. If it occurs with two outs, the female batter may elect to take first base.

Teams are required to hustle on and off the field between innings. No warm-ups allowed after the first inning.

Only USSSA, ASA and old bats allowed.

No new inning will start after 55 minutes.

Mercy run rule: 20 runs after 3 innings, 15 after 4, and 10 after 5. Flip-flop rule will be used.

Pitching arc is 6'-10'.

Three over the fence home runs allowed per team per game. After three it will be an out.

No base stealing.

Batting team is required to fetch all balls that go out of play and return them to the field.

All rules not mentioned above follow USSA's slow pitch softball rules (<http://www.ussa.com/ussa/ussa-general/2011SPRuleBook.pdf>) and will be interpreted by the Field Umpire and if necessary Tournament Committee Members Brian Chacka and Sara Miller. You may protest an interpretation, but NOT a judgment call.

For any emergencies, call Brian Chacka (972.835.1920) or Sara Miller (817.504.0976).